

APPLICATION GREEN DOT AWARDS

1. Background / contact

ABOUT US:

After winning the international architecture competition for the new 1200 sqm strandbaden dancehall in 2006 Mr Kaminsky and Mr Kjellgren formed a new architectural office.

Based in Gothenburg, Sweden, we look upon the world as our working field. Joakim and Fredrik have experience from working at internationally recognized architectural firms such as Wingardhs and UN-Studio, Ben Van Berkel.

We work with architecture in its broadest meaning ranging from furniture to city planning, from theory to practice. We aim to create functional and sustainable architecture with a poetic dimension.

CONTACT:

Phone: 00 46 31 761 2001

Mail: info@kjellgrenkaminsky.se

Web: www.kjellgrenkaminsky.se

2. Detailed explanation of the entry

Together with a builder, Emrahus, we have introduced the first series of prefabricated passive houses in Sweden, making this technology available for a wider public.

Passive houses are extremely well-insulated buildings that are largely heated by the energy already present in the building - people and our household equipment generate a lot of energy. As 40% of the energy usage in Sweden is used for heating buildings passive houses are an important and effective measure to halt the greenhouse effect.

3. Manufactory and delivery

The houses are assambled on spot, but the building elements are produced in a factory in the south of Sweden. The raw material for the elements, polycarbonate, is transported to the factory in its uninflated form and therefore takes up a minimum of space.

All suppliers for interior fittings and instalations are evaluated with concern to enviromental aspects.

4. Eco-sustainability

The houses are designed to apply to the Swedish passive house norm stipulating a maximum energy usage of 55 kWh/m² and a maximum energy effect of 12 W/m². The houses are outfitted with heat exchangers that recovers the energy in the ventilated warm indoor air and solar panels to heat the tap water.

The construction system is developed by CTEN and Emrahus and consists of 50 cm thick polycarbonate elements. After put in place concrete are poured into cavities in the elements and the wall is finished. The facade can be covered with any material, but plaster as standard. The construction vouch for an airtight building, an important feature for a passive house.

5. Presentation of the entry

The houses have been presented to the public in the form of a folder including images, plans and description for each of the seven houses. The folder is submitted in this file as presentation of the project.

More info available here:
www.kjellgrenkaminsky.se
www.emrahus.se

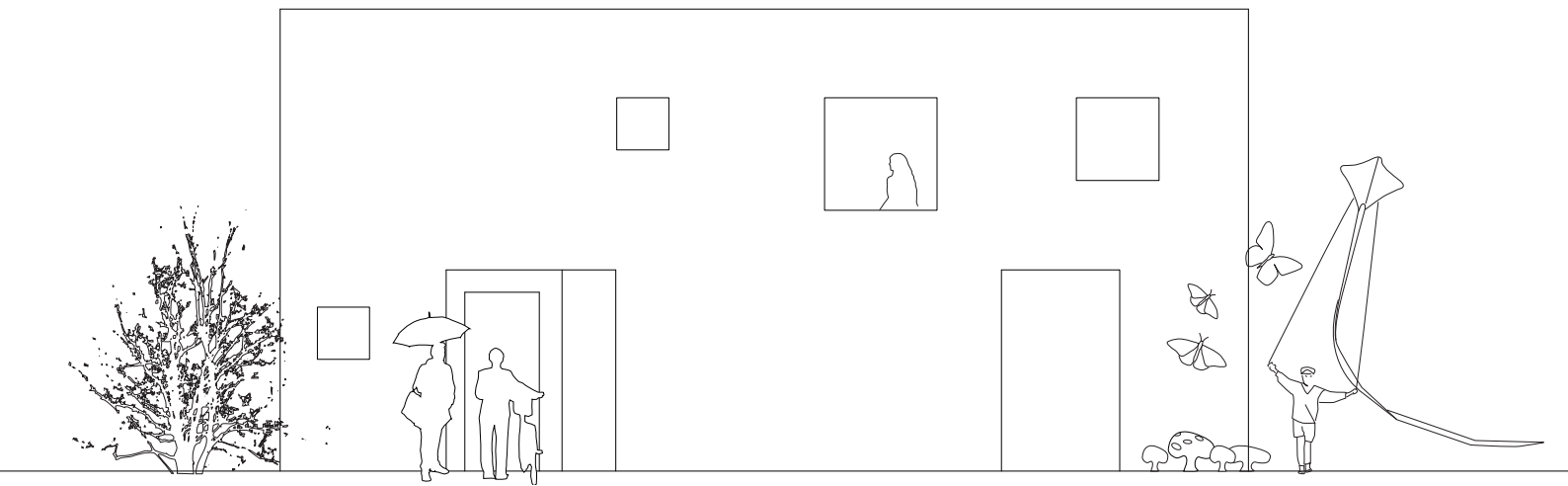


VILLA VY

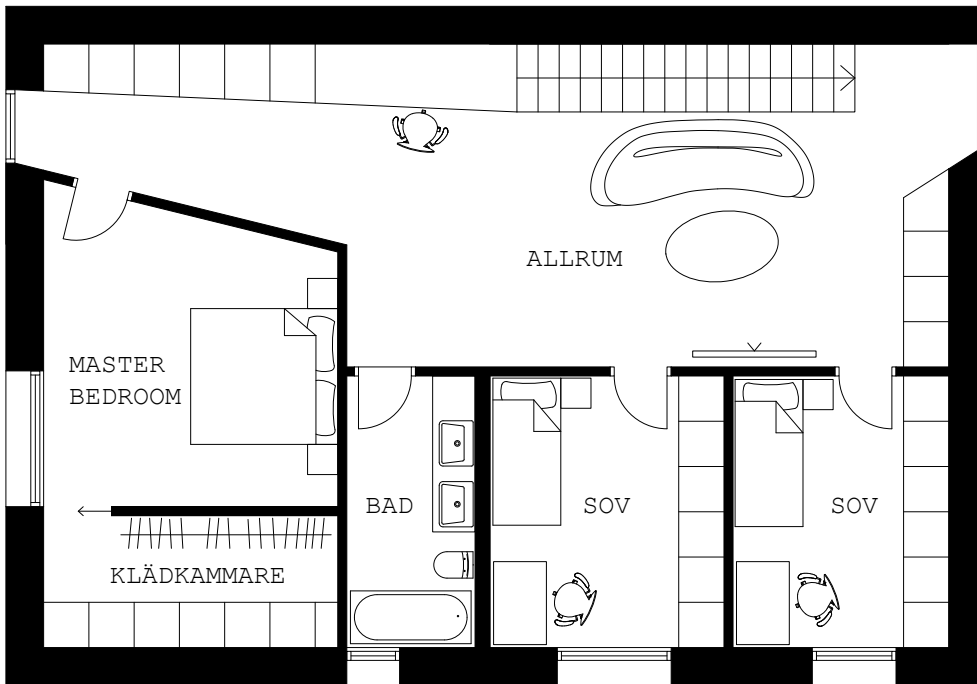
AREA: 200m²

BEDROOMS: 3

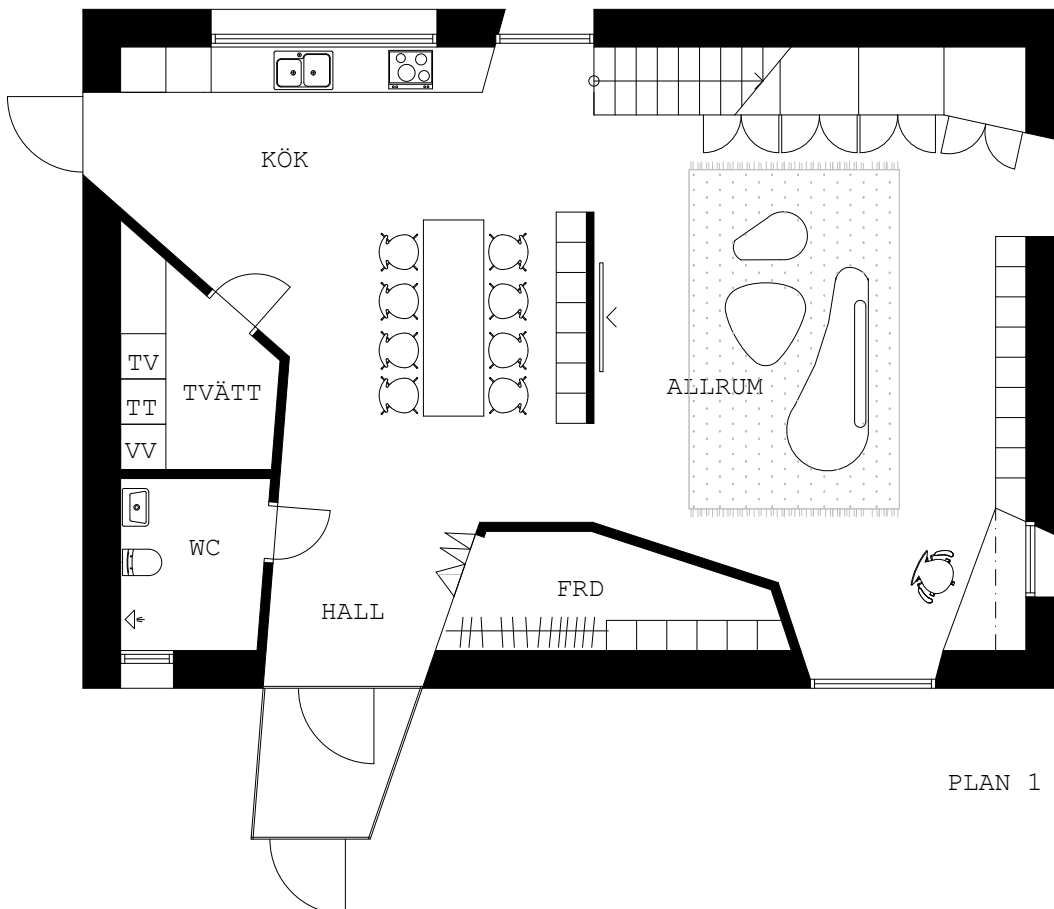
Our whole family lies on the couch playing. We are in what we call the living room, but really the whole bottom floor is one big room. There are no doors here, instead the rooms float into each other seamlessly. It makes the house seem bigger than it really is. On the upper floor are our bedrooms. Right now we use one of them as a working room, so theres room for the family to grow. In a couple of years we will probably have moved the computer to the hall outside, where theres a built in work place with a view.



Villa Vy
Facade
Scale: 1:100



PLAN 2



PLAN 1



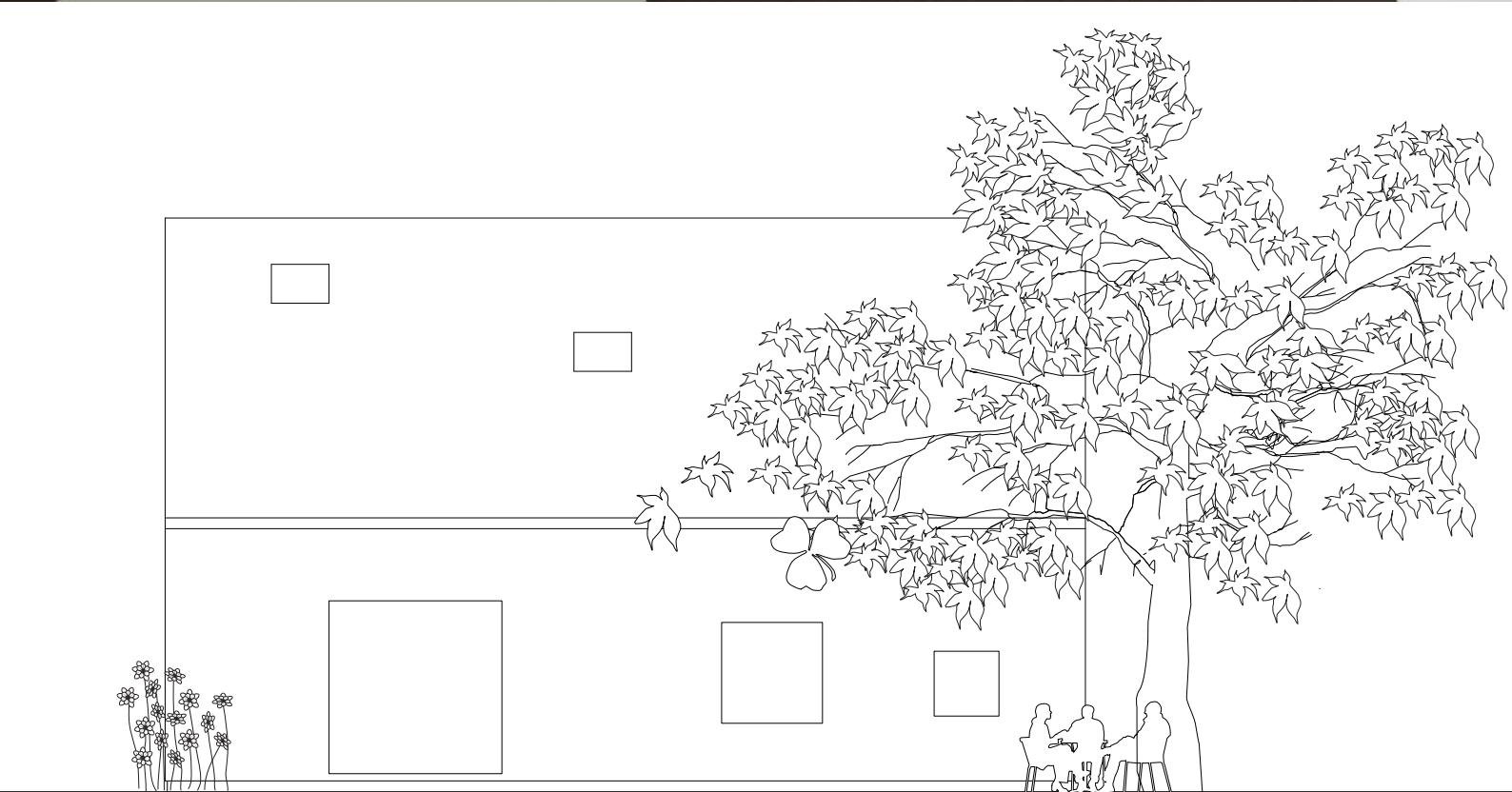
VILLA SADELTA

AREA: 160m²

BEDROOMS: 4

We are just moving into our new house. Carrying a carpet I stop outside the entrance and look around. In the area there's a mix of old and new buildings. We wanted our house to fit in among the other, but still have a modern touch. Now when the house is built it looks as if it were a younger relative to its neighbors. The main characteristics are the same; the volume of the house with its ridged roof, the plaster facade and the pan tile, but if one looks closer there are many differences as well. White plain plaster in combination with black plain pan tiles gives the house a minimalistic monolithic volume. The windows are positioned to support a modern floorplan.

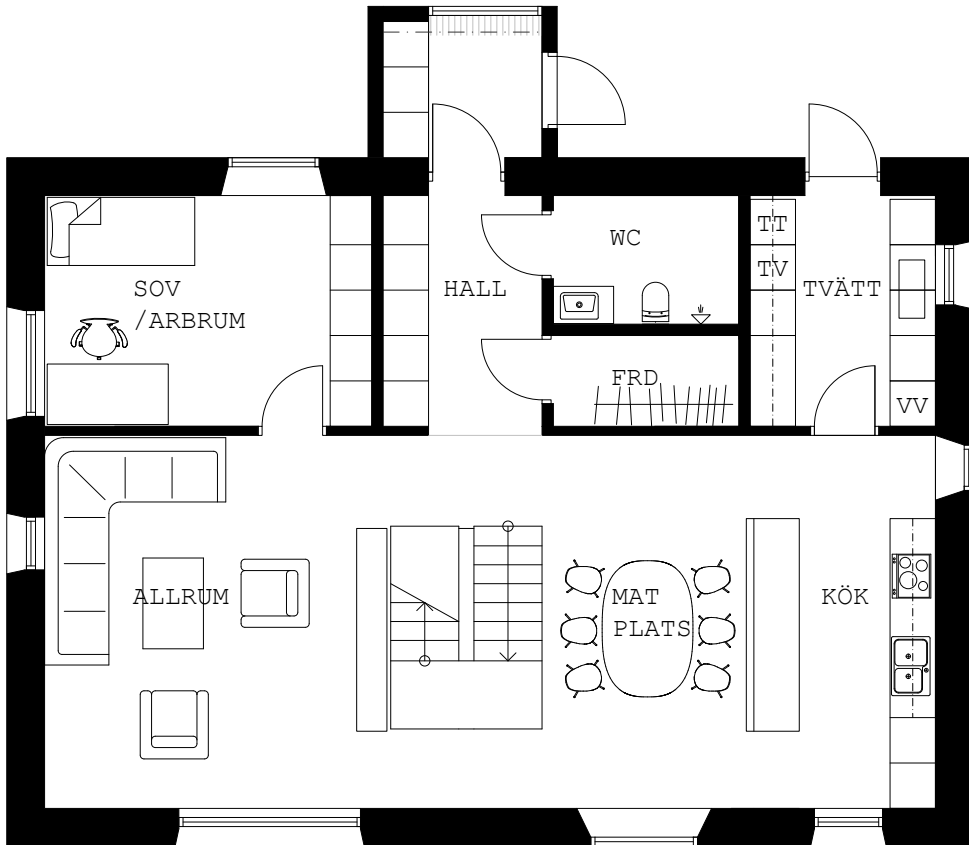
I enter the house and walk up the stairs. The kitchen and living room form one large room on one side of the house. The stairs divide the two functions of the room. Me and my wife walk upwards towards the bedrooms, the carpet is destined for our master bedroom.



Villa Sadeltak
Facade
Scale: 1:100



PLAN 2



PLAN 1

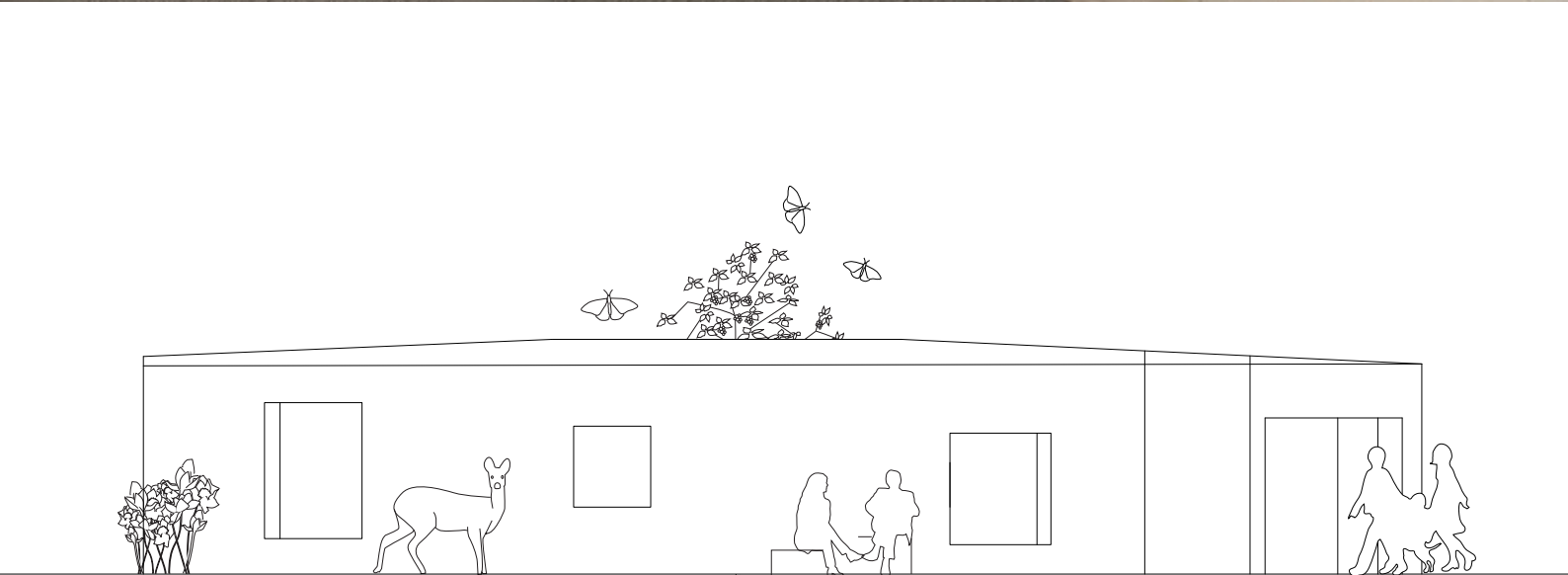


VILLA ATRIUM

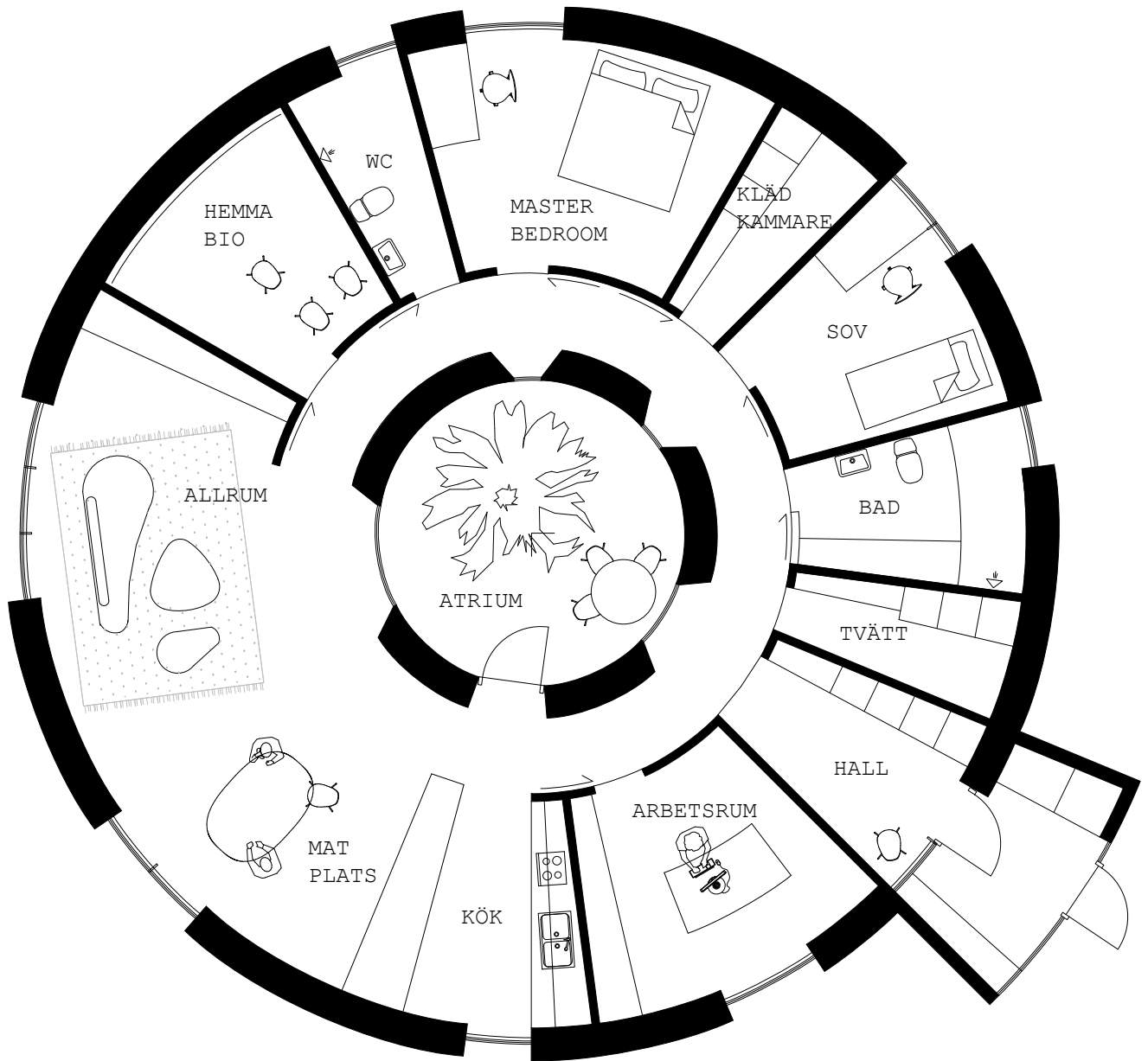
AREA: 160 m²

BEDROOMS: 2

The autumn is closing in, but its still warm in the sun. Its Sunday morning and I'm reading the newspaper in the kitchen. From here I can see almost the whole house. The kitchen and the living room form one big open room. From there two corridors running along the atrium connects it with the bedrooms. If I look into the atrium I can see the doors to the bedrooms on the other side, there our kids are still fast asleep, they stayed up a bit too long yesterday watching movies in our home cinema. On the middle of the atrium stands an apple tree. The apples are ripe and looks like red Christmas balls on the tree. I walk out and start picking them, today the whole family will have apple pie for breakfast!



Villa Atrium
Facade
Scale 1:100



Villa Atrium

Plan
Scale 1:100



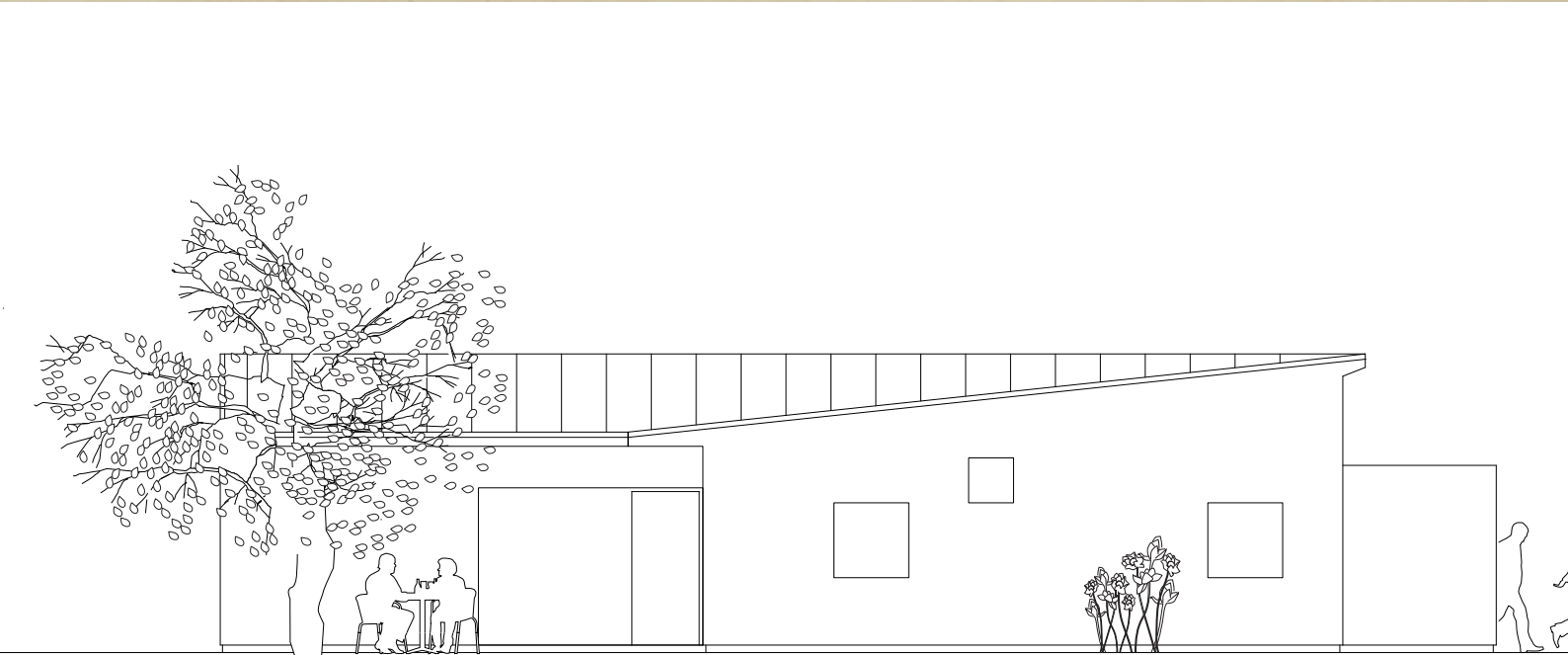
VILLA VINKEL

AREA: 150 m²

BEDROOMS: 4

I sit in our living room looking out. It almost feels as if I'm outside. The room forms a large open space together with the kitchen. Its formed as an L that protects our garden and offers a view over the endless fields outside. In the middle of the space theres a piece of furniture containing the kitchen, wardrobes, storage and the dining table. One can walk around the piece. On the backside of it theres the bedrooms with storage and bathrooms close at hand.

As soon as my wife are finished talking on the phone we'll go into town to buy some toys for our kitten, she really needs some entertainment besides playing with our furnishment.



Villa Vinkel
South facade
Scale 1:100

